

Instructions for adding the Homewood Public Library Wireless Printer for Windows 7 (for printing from personal laptops)

These instructions are for Windows 7. Instructions for Windows XP and Windows Vista are also available.

You can download the most current drivers from the Ricoh Website:

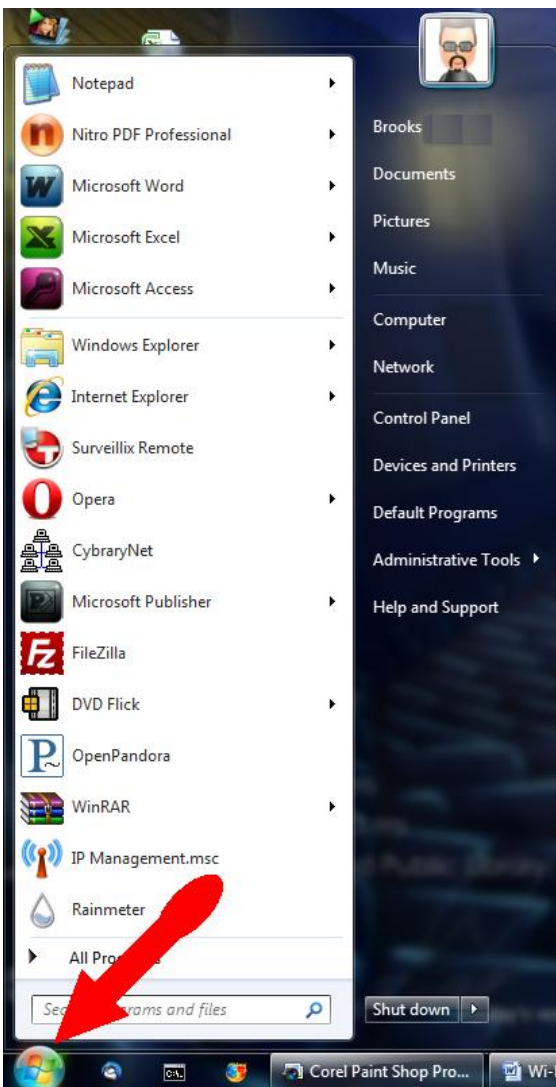
http://support.ricoh.com/bb/html/dr_ut_e/rc2/model/cl410/cl410en.htm

Pick out your version of Windows and download the driver. We recommend the PCL 6 Driver for Universal Print as this seems to work best on our system and these instructions will assume that this is the driver that you have downloaded.

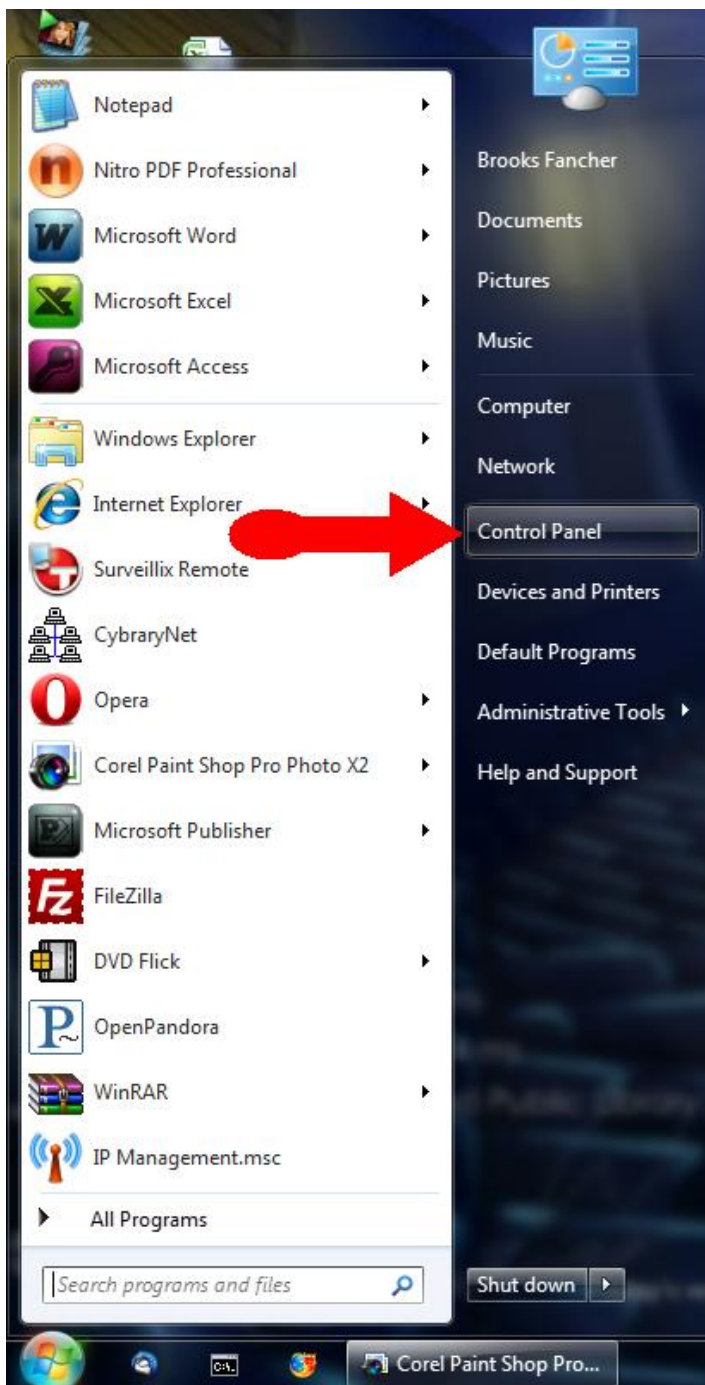
These instructions are general guidelines and may differ slightly from your computer due to any changes made from the default configuration.

First, download the drivers for the Ricoh SP C411DN and unzip the drivers (doubleclick to unzip) to an easy to remember location on your hard drive.

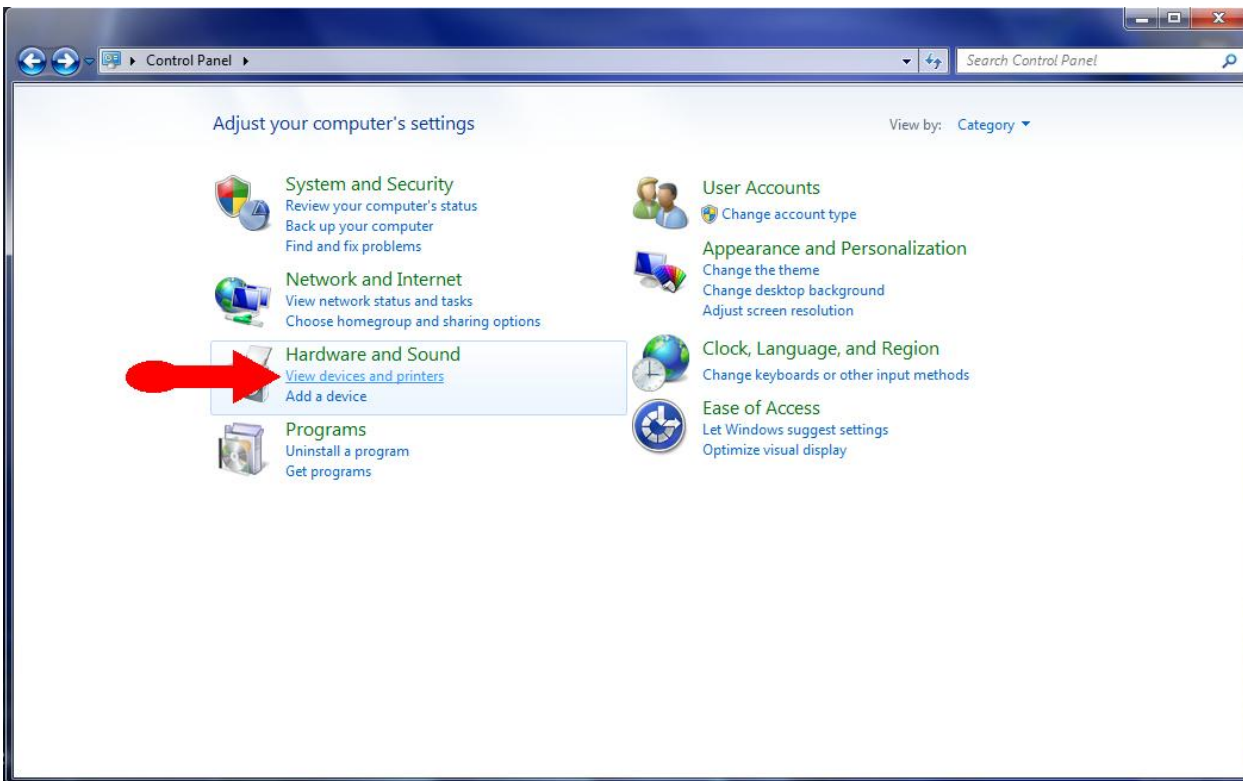
Click on the Start Orb.



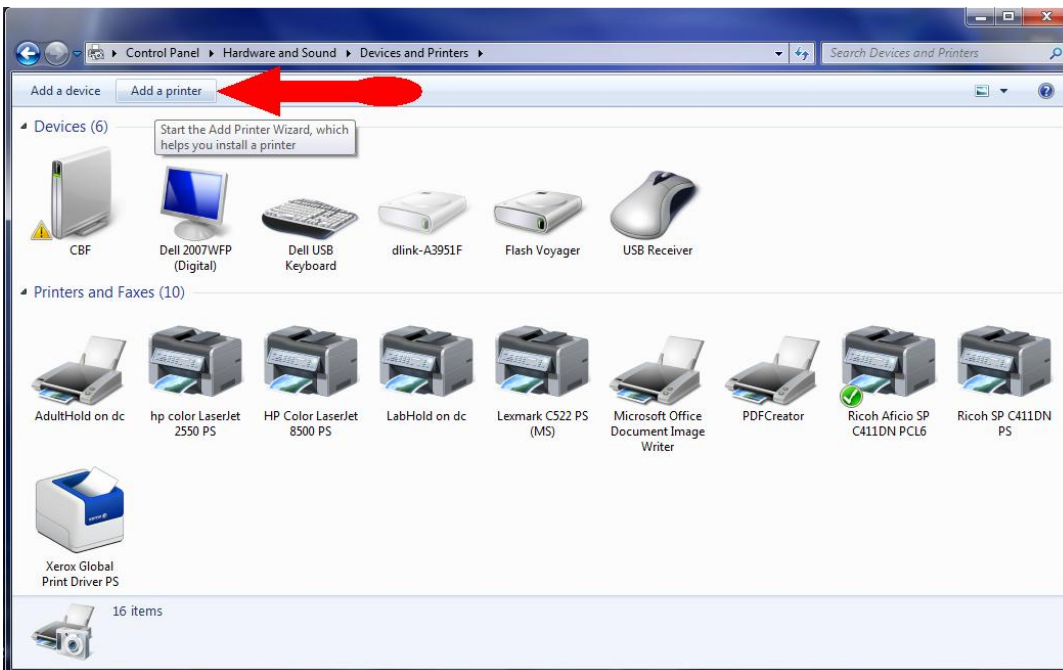
Click Control Panel.



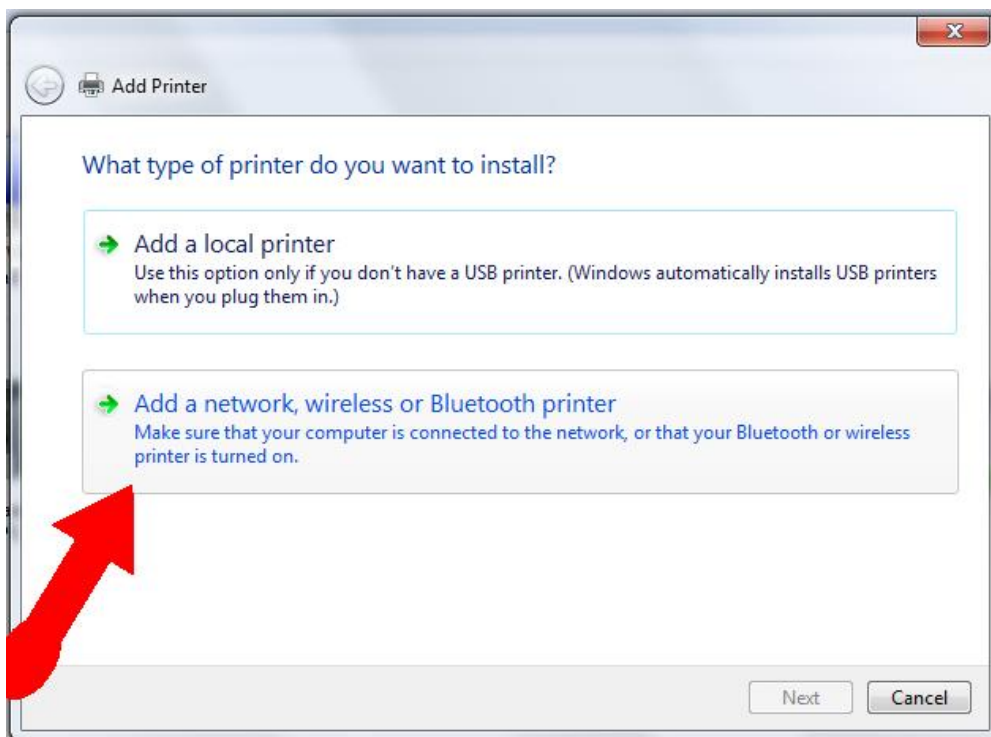
Click View devices and printers



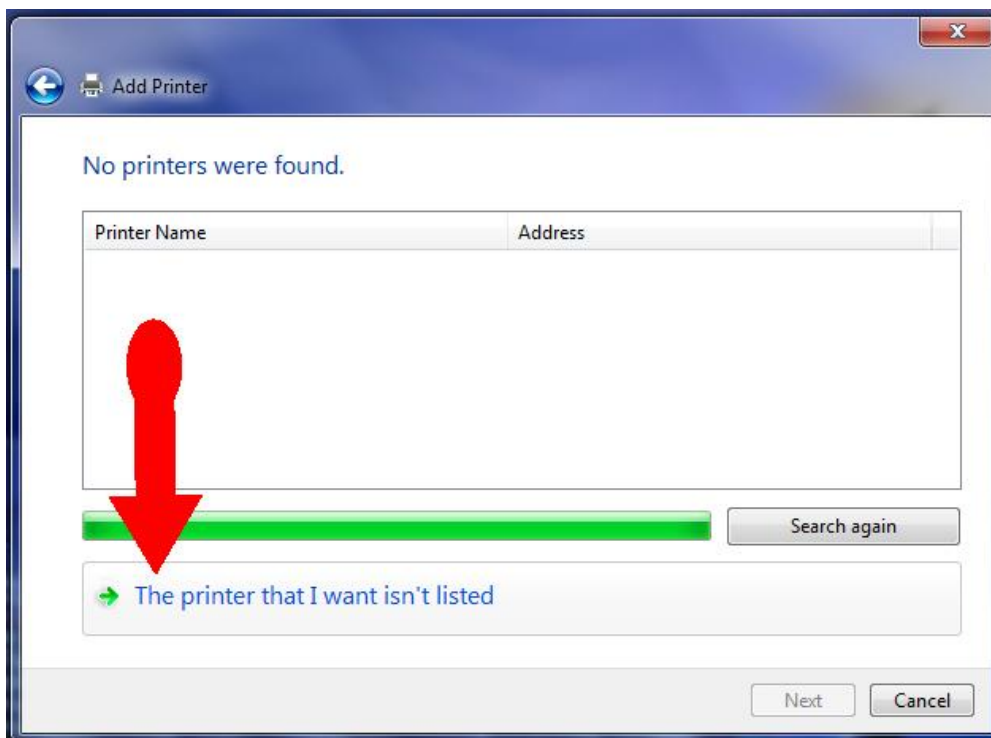
Click on Add a Printer.



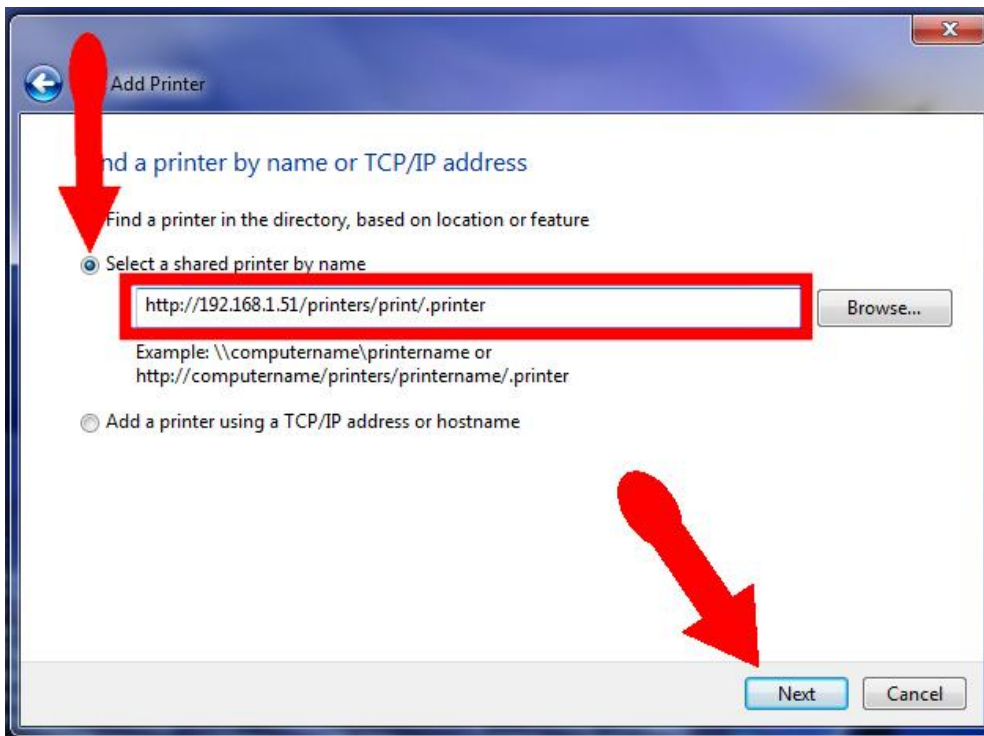
Click on Add a network, wireless or Bluetooth printer.



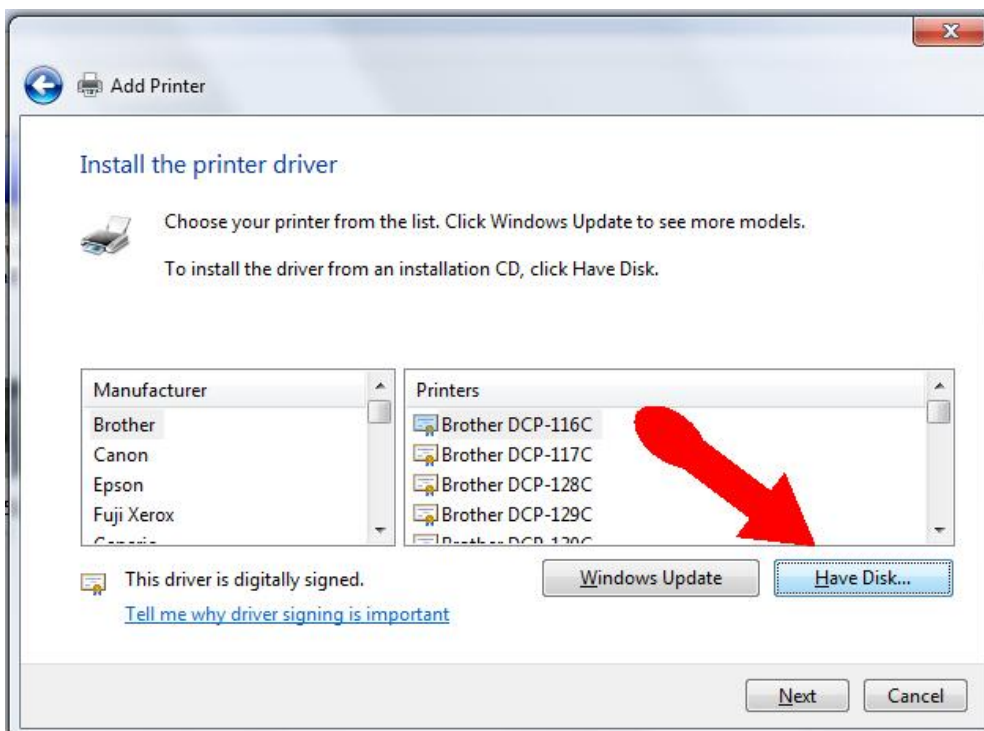
Click on The Printer that I want isn't listed.



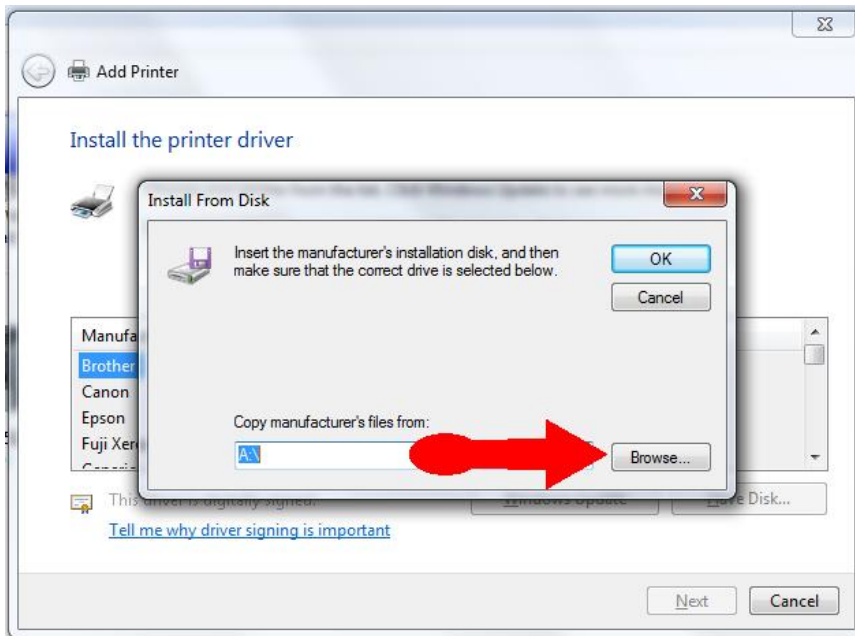
Click on Select a shared printer by name and type in the following `http://192.168.1.51/printers/print/.printer` and click Next.



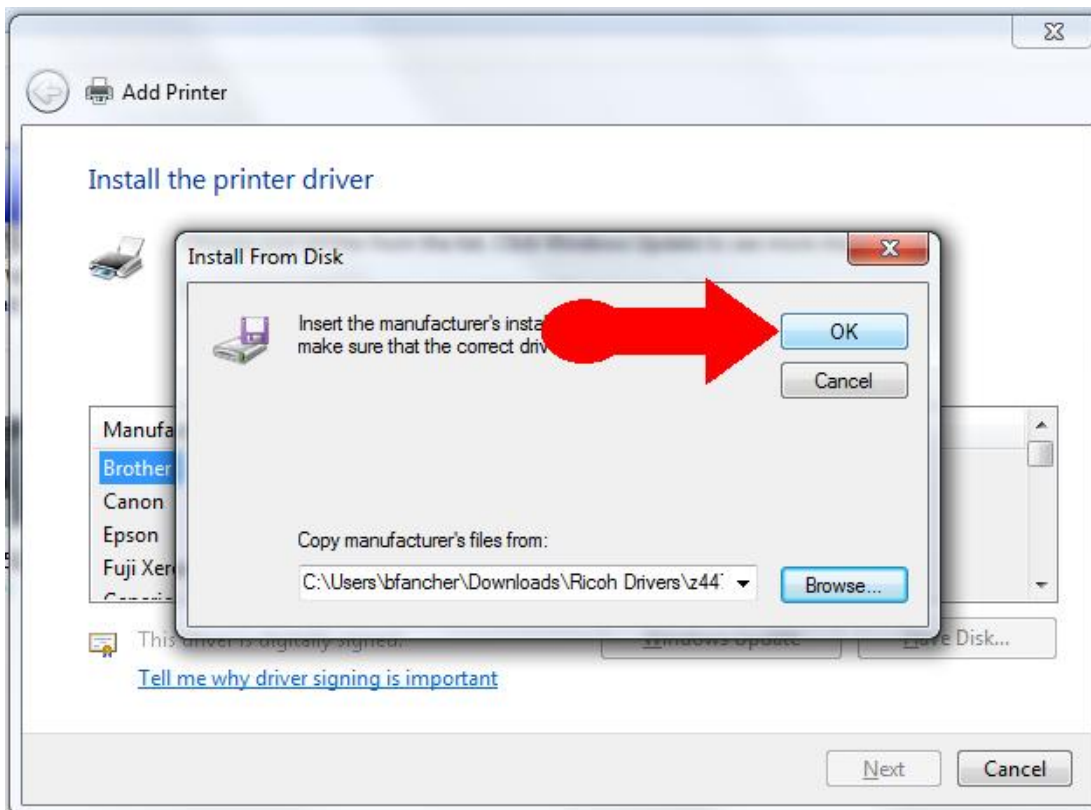
The Add Printer Wizard should open up. When it does, click on Have Disk.



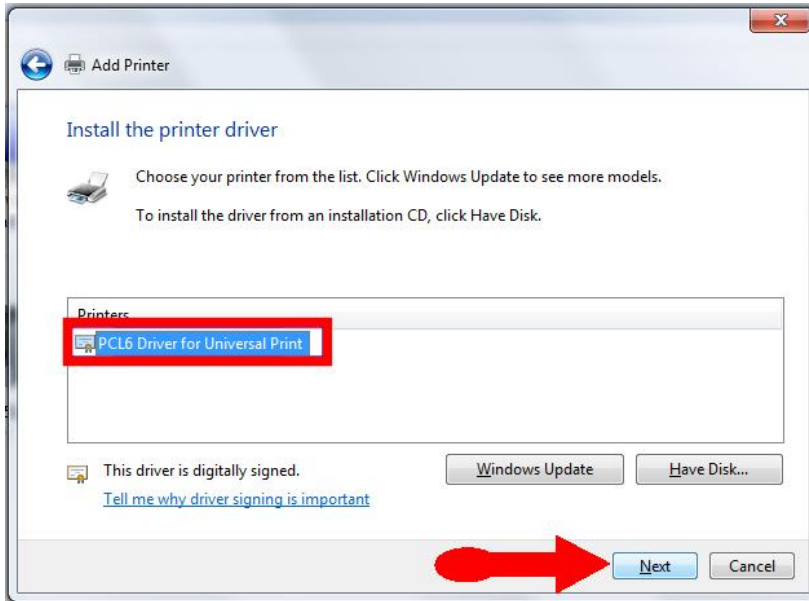
Browse to the location that you unzipped the drivers from earlier and select the file named OEMSETUP.inf (it will probably already be selected for you) and click open.



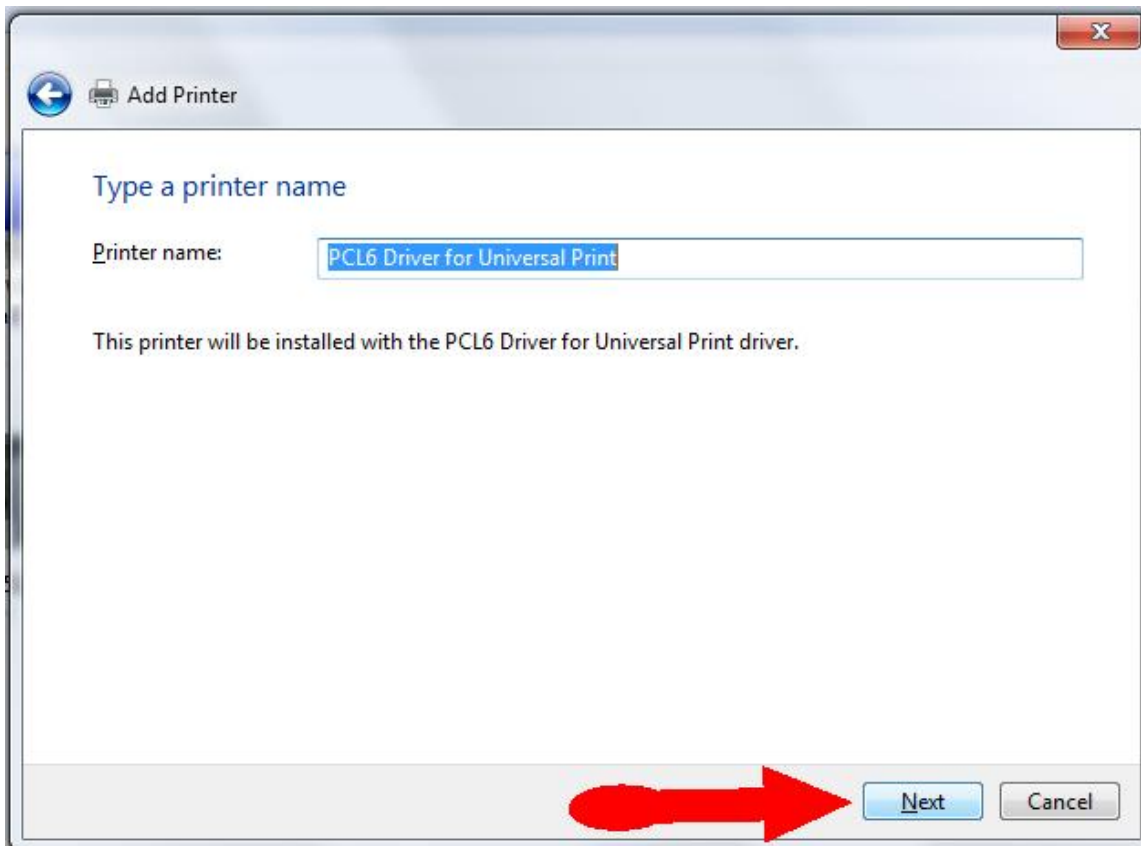
Now click on the OK button.



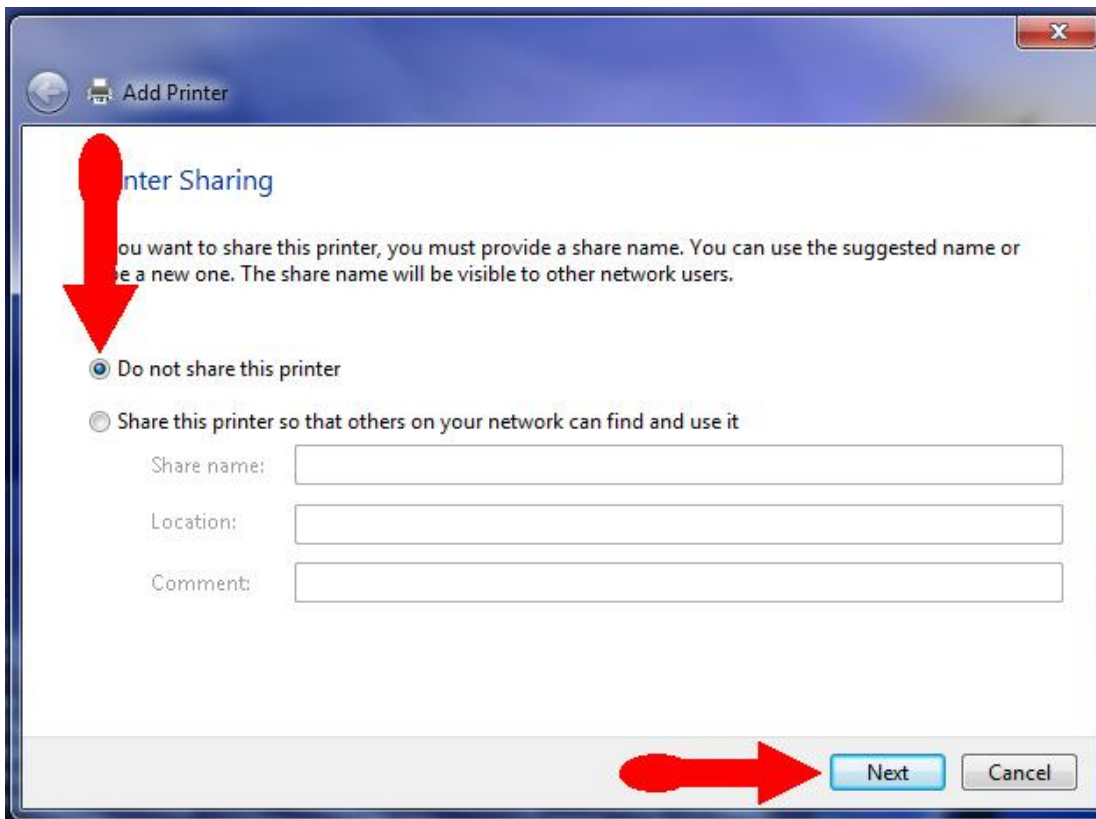
Pick the PCL6 Driver for Universal Print and click Next.



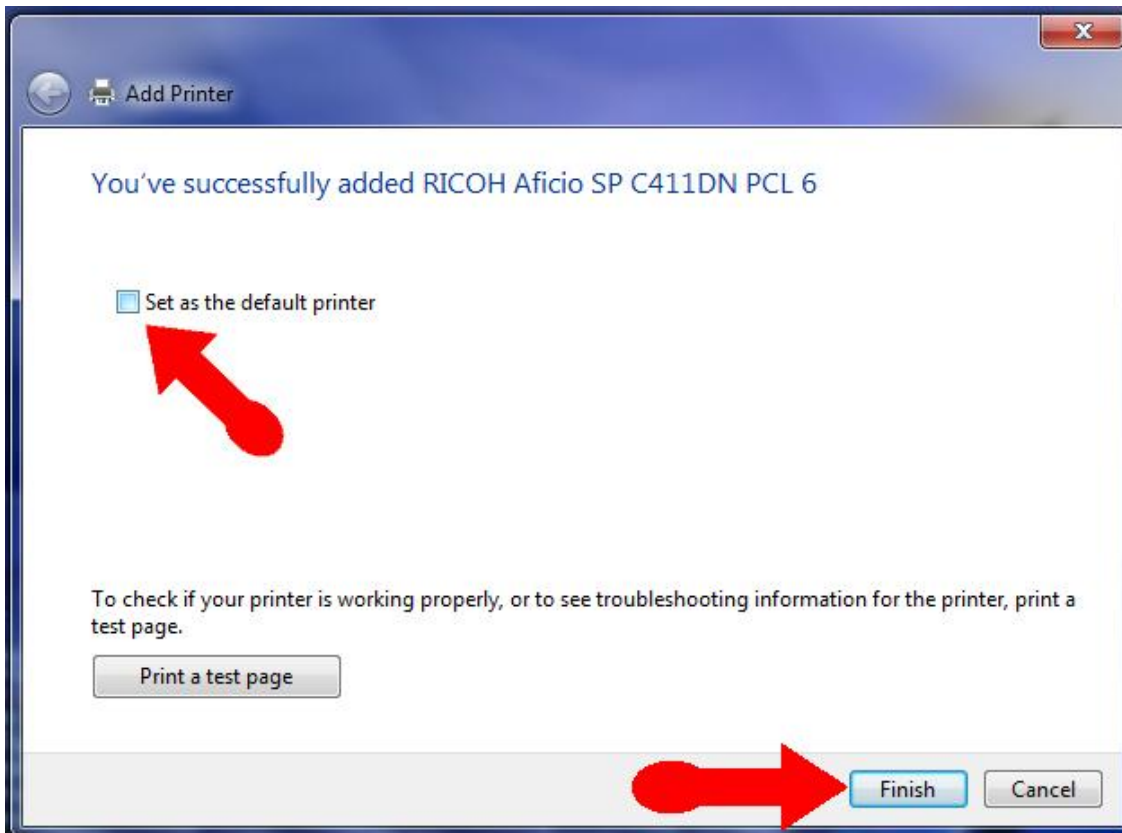
Pick a name for your printer.



Click on Do not share this printer and then click Next.



Uncheck Set as Default Printer and click Finish.



It may take a minute or so for the system to install the print drivers.

It may also ask if you want to print a test page. Tell it no.

Make sure that all of the boxes have ended and you are finished. Sometimes Windows will seem to hang at the last stage. Just wait a few minutes. You can browse the internet or do something else until it finishes.