

## Instructions for adding the Homewood Public Library Wireless Printer on XP (for printing from personal laptops)

These instructions are for Windows XP. Instructions for Windows Vista and Windows 7 are also available.

You can download the most current drivers from the Ricoh Website:

[http://support.ricoh.com/bb/html/dr\\_ut\\_e/rc2/model/cl410/cl410en.htm](http://support.ricoh.com/bb/html/dr_ut_e/rc2/model/cl410/cl410en.htm)

Pick out your version of Windows and download the driver. We recommend the PCL 6 Driver for Universal Print as this seems to work best on our system and these instructions will assume that this is the driver that you have downloaded.

These instructions are general guidelines and may differ slightly from your computer due to any changes made from the default configuration.

First, download the drivers for the Ricoh SP C411DN and unzip the drivers (doubleclick to unzip) to an easy to remember location on your hard drive.

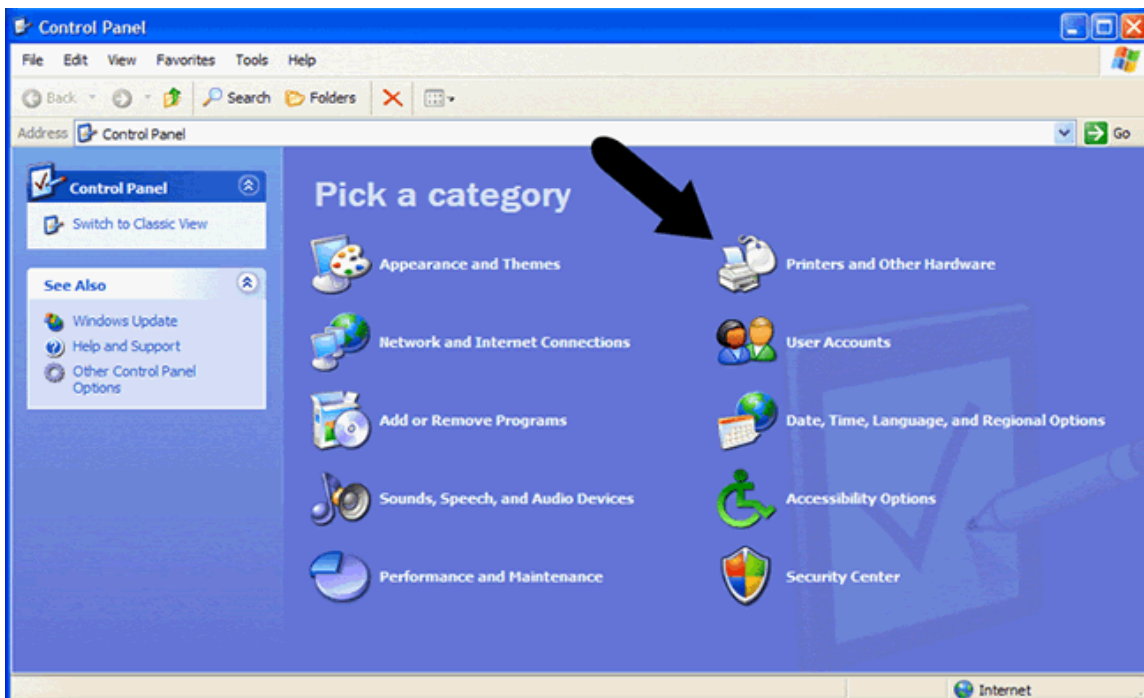
Click on Start.



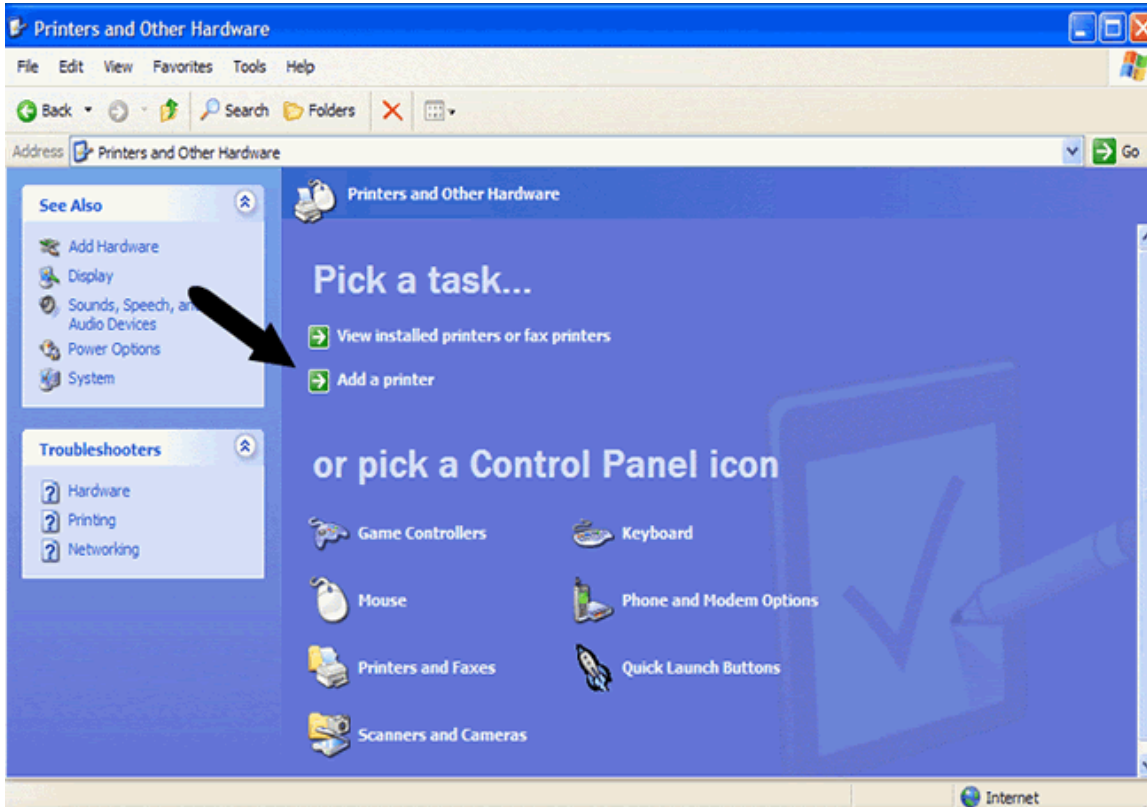
Click Control Panel.



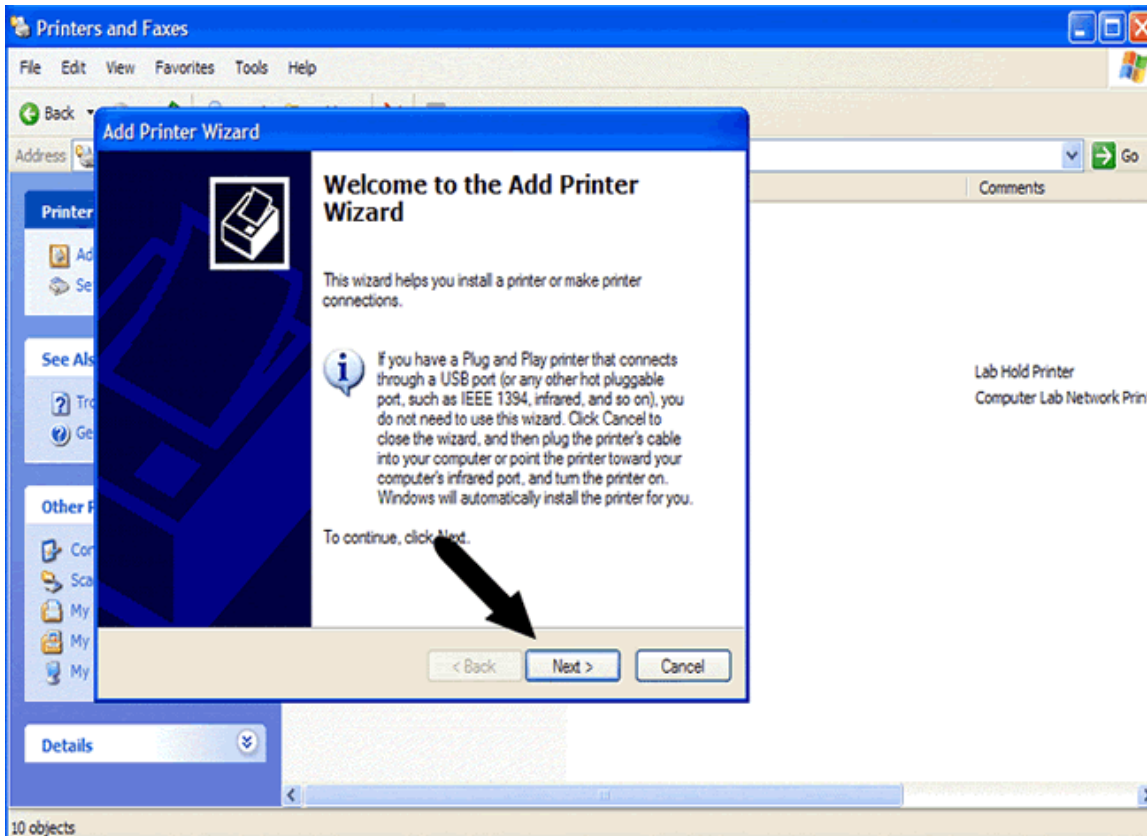
Click on Printers and Other Hardware.



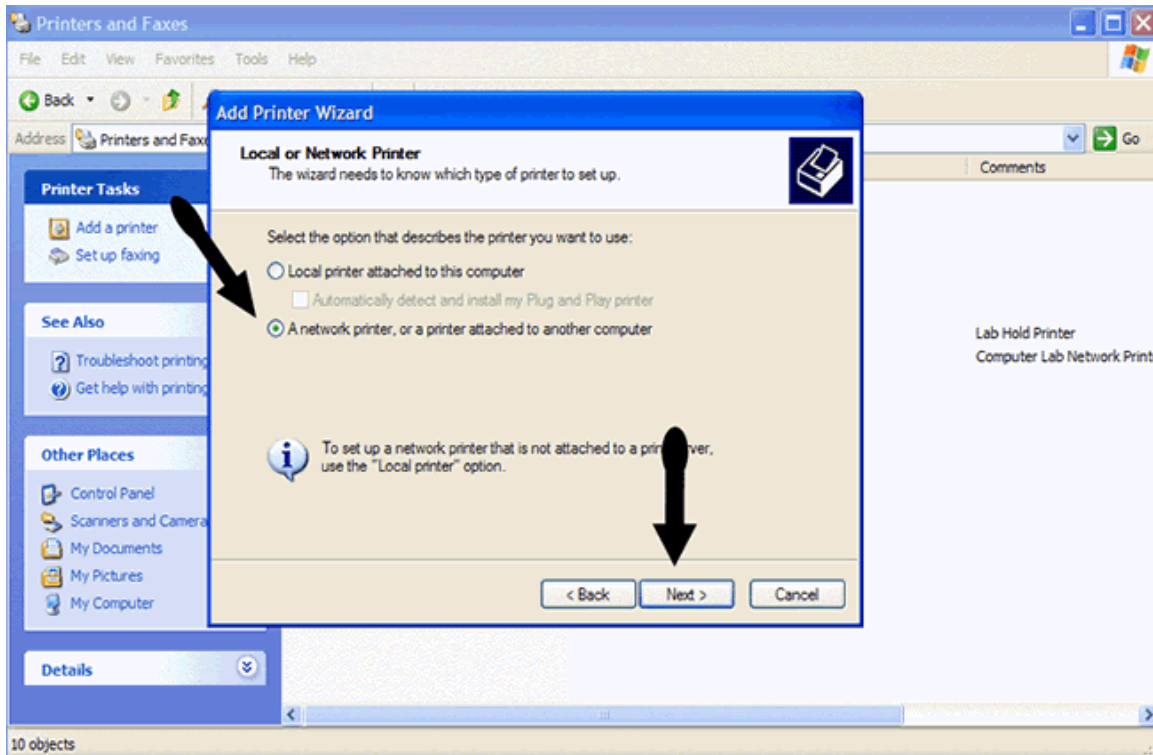
Click on Add a Printer.



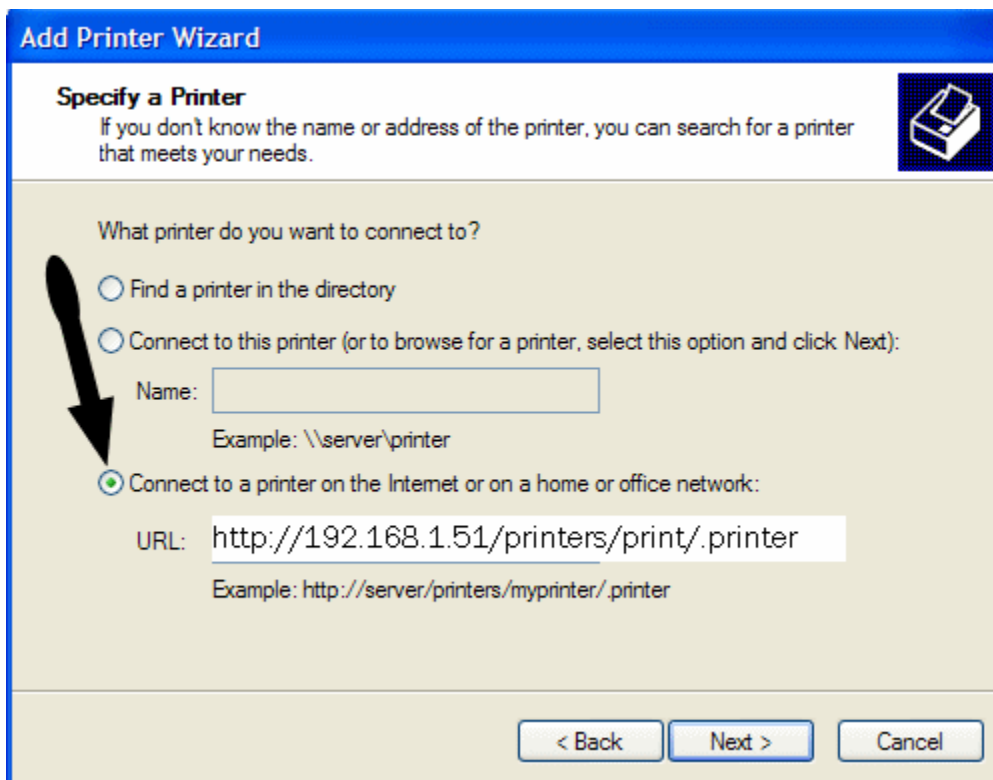
Click on Next.



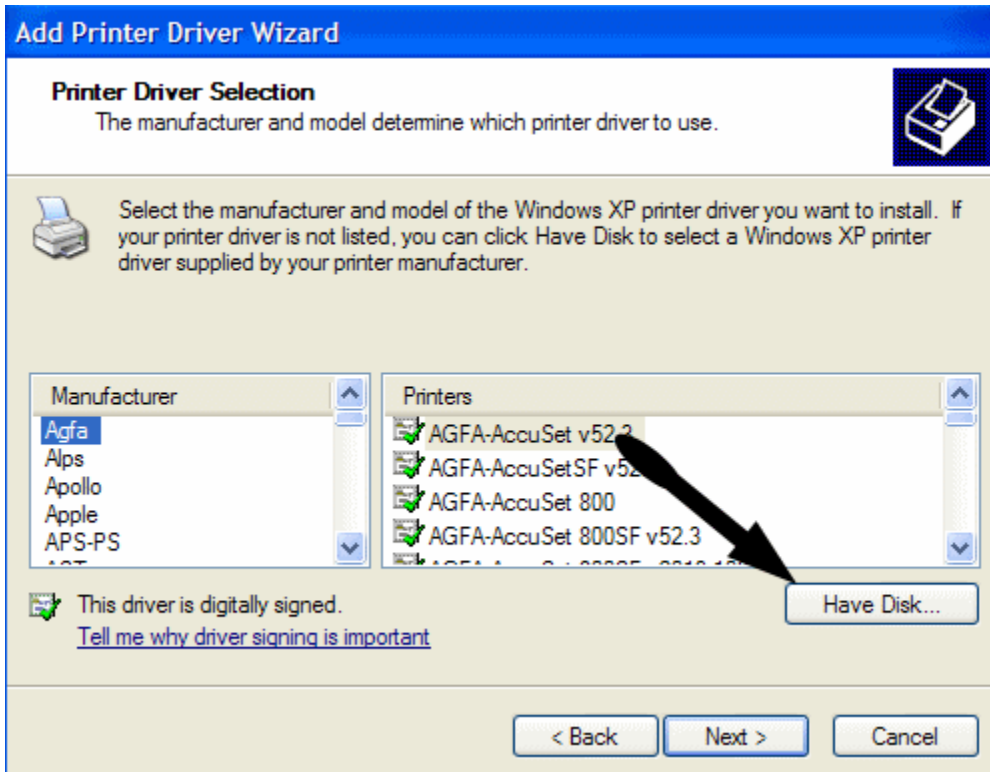
Select "A network printer or a printer attached to another computer" and click Next.



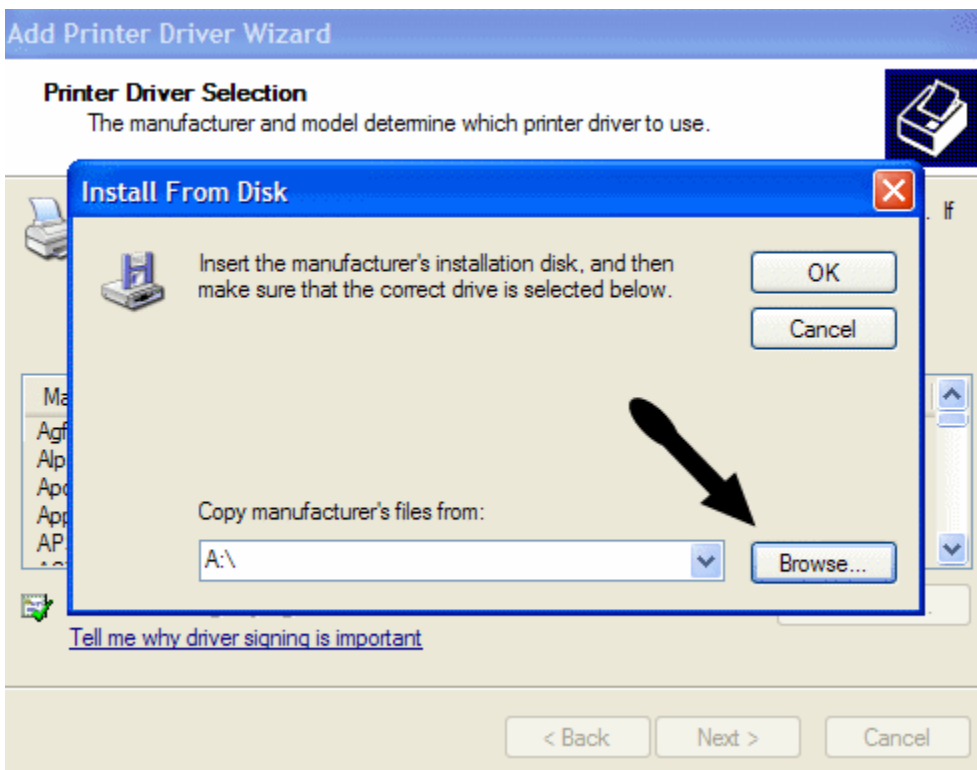
Select "Connect to a printer on the Internet or on a home or office network" and type in the following <http://192.168.1.51/printers/print/.printer> and click Next.



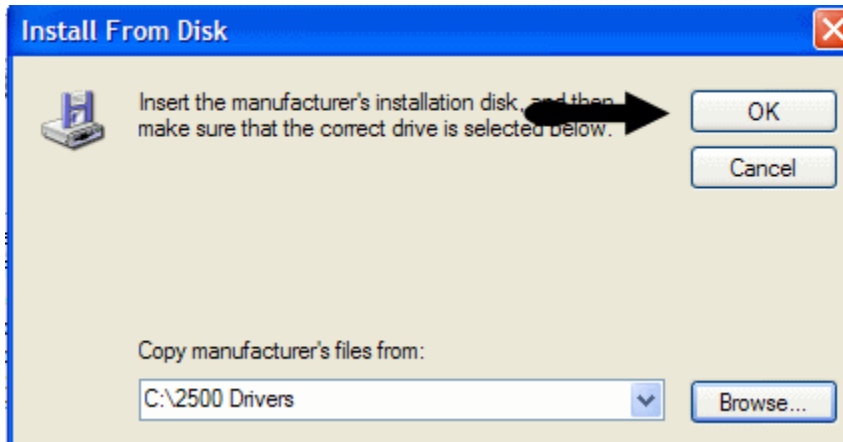
The Add Printer Driver Wizard should open up. When it does, click on Have Disk.



Browse to the location that you unzipped the drivers from earlier and select the file named OEMSETUP.inf (it will probably already be selected for you) and click open.

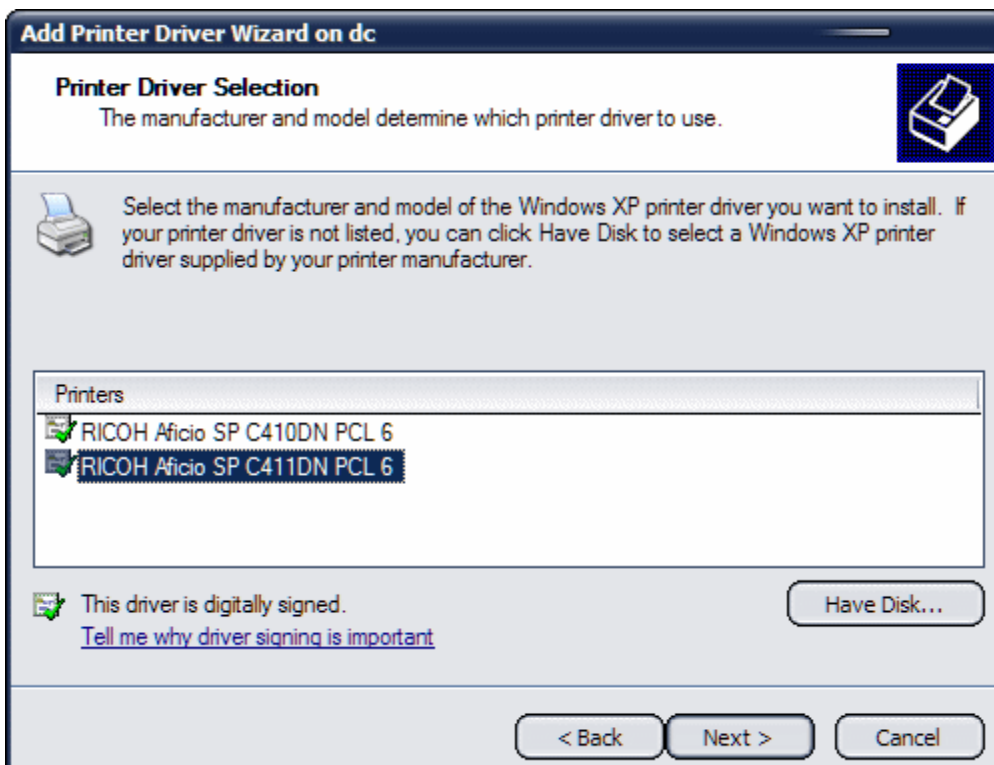


Now click on the OK button.

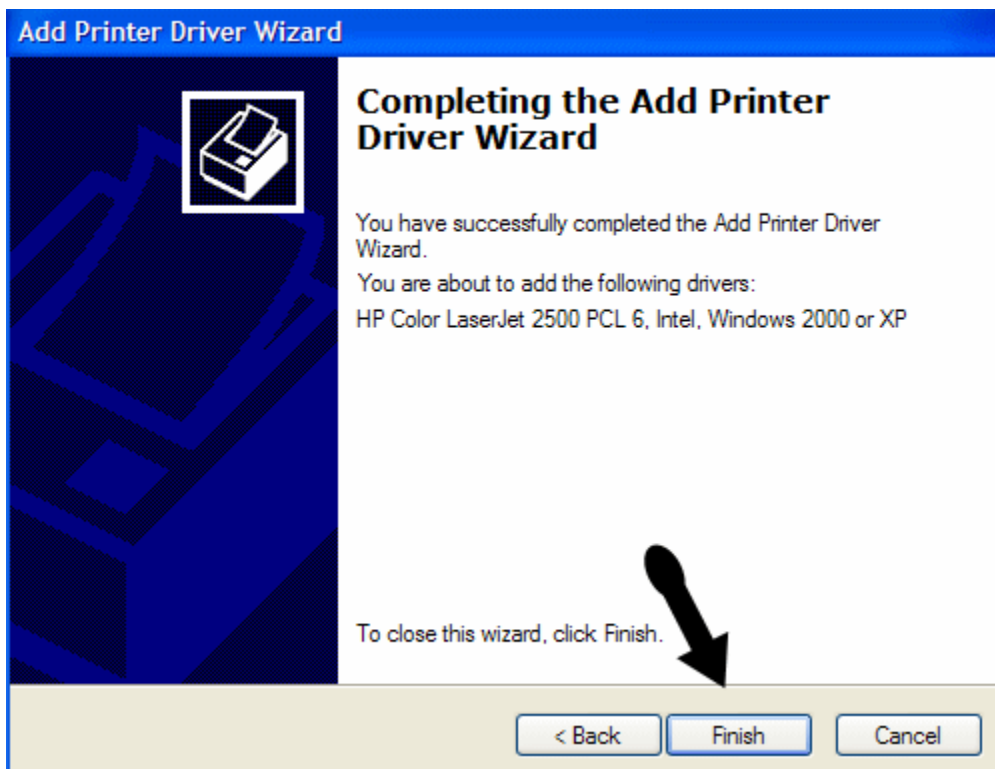


Pick the RICOH Aficio SP C411DN PCL 6 driver.

Click Next



Click Finish



It may take a minute or so for the system to install the print drivers.

At this point, Windows XP may ask, "Do you want to set the printer as the default?" This is up to you. Just remember to select "Print on http://192.168.1.51" when you are ready to print.

It may also ask if you want to print a test page. Tell it no.

Make sure that all of the boxes have ended and you are finished.